



INSTALLATION GUIDE AND TECHNICAL SPECIFICATIONS

Opera® Motion Divan Kit

Motion Divan Base

If you purchased your motion base with a divan base, please follow the following steps carefully to assemble the base.

Contents

OP080 Head End Surround x1



OP081 Foot End Surround x1



OP082 Side Surround x2

N.B. Only one side surround is provided with the underbed drawer option.



OP083 Side Drawer Surround x1

N.B. Only provided with the underbed drawer option.



OP084 Underbed Drawers x2

N.B. Only provided with the underbed drawer option.



Fixings include:
4 x Drawer front bolts
4 x Castors
8 x 16mm Posidrive screws

OP085 Side Surround Bracket x4



OP086 Side Surround Bolts x16



OP087 Extension Feet x6



OP088 Corner Feet x 4



Before you begin, you will also need:

- M6 Allen Key
- Posidrive Screwdriver

1 | Remove Divan Surround from Outer Packaging

Remove the divan head end, foot end, side skirts and brackets from the packaging.

You should have:

1 x Head End Surround

1 x Foot End Surround

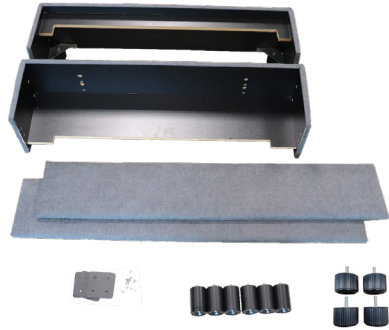
2 x Side Surround

4 x Brackets

16 x Bolts

6 x Extension Feet

4 x Corner Feet



2 | Attach the Extension Feet

If you did not attach the Extension Feet (OP087) in the smart base assembly section, please remove the feet, attach the extension feet and reattach the feet.



3 | Screw the Brackets onto the Head and Foot Ends

Attach the Side Surround Brackets (OP085) to the sides of the Head End Surround (OP080) using the Side Surround Bolts (OP086). Repeat for the Foot End Surround (OP081).



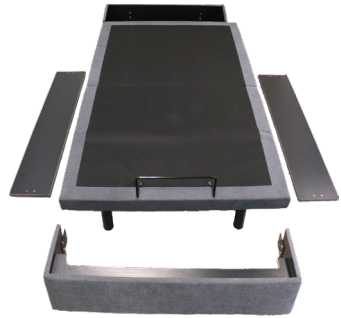
4 | Fix Corner Feet

Screw the plastic corner feet (OP088) to the corner plates on the underside of the head and foot ends.

5 | Align the Divan Surround with the Smart Base

Align the Head End, Foot End and Side Surrounds with the smart base.

N.B. The Head End can be identified with the large and low cover inside and the Foot End can be identified with the shorter and high cover.



6 | Prepare Smart Base

To complete the installation, you need to place the smart base into the surround. It is easiest if you first raise the back and leg rest of the base so you can easily access the frame underneath for lifting and positioning within the surround.



7 | Screw the Side Surround to the Foot End

Connect the Side Surrounds to the brackets on the Foot End using the Side Surround Bolts (OP086).



8 | Push the Surround Under the Bed

Once the Side Surrounds are attached on both sides push the surround under the bed until the cover on the foot end touches the smart base legs.



9 | Screw the Head End to the Side Surround

Push the Head End Surround under the smart base and connect the Side Surround with the Head End bracket using the Side Surround Bolts.



10 | Ensure the Divan Base is Aligned with the Smart Base

Return the Smart Base back to the flat position. Check that the Divan Base is aligned with the sides of the smart base. Re-adjust the divan if needed.



11 | Assemble Drawers

Fit the four castors to the underside of the drawer in the pre-drilled holes using the 16mm Posidrive screws (x8). Attach the upholstered drawer front to the drawer using the M6 35mm bolts (x4)

12 | Place the Underbed Drawers into the Surround (Only for Underbed Drawer Options)

Place the underbed drawers under the divan surround.



Installation of your divan bed is now complete!

Optional Motion Divan Headboard

If you purchased your smart base with a divan headboard, please follow the following steps carefully to assemble.

Before you begin, you will also need:

- M6 Allen Key
- Spanner

Contents

OP060 Headboard Bracket x 2



OP061 Headboard x 1



OP062 Bolt x 4



OP063 Washers x 8



OP064 Thumb Screws x 4

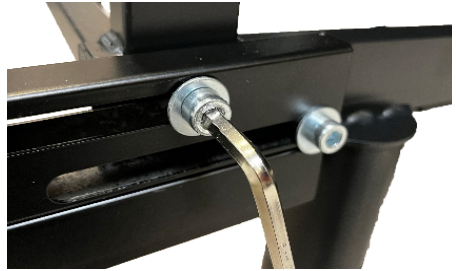


OP065 Nut x 4



1 | Attach Bracket to the Bed Frame

Elevate the bed backrest to the highest setting to allow enough room to work with the metal bed frame. Locate the two holes on the head end of the frame to attach the bracket (OP060). Using the bolts (OP062) and washers (OP063) place the bolt through the bracket. Ensure the bracket is in the correct position by lowering the backrest to the flat position and aligning the bracket approximately 5mm away from the backrest edge. Tighten the bolts into the bed frame using the Allen key. Repeat for the opposite side.



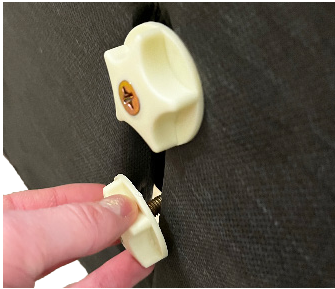
2 | Pierce the Thumb Screw Through the Fabric

Using your fingers locate the holes behind the fabric in the head end of the bed. Once the holes are located pierce through the fabric with the thumb screw (OP064). Repeat this for all four holes. When the holes have been made, align the headboard with the head end of the bed.



3 | Tighten the Headboard Thumb Screw

Place the thumb screws (OP064) into the headboard and the bracket holes. Place the washers (OP063) and nuts (OP065) onto the thumb screw inside the bed frame. Tighten the nut using a spanner. Ensure the nut has been tightened enough to prevent any unwanted movement with the headboard.



4 | Test the Headboard

Test that the headboard is secured to the bed by ensuring there is minimal movement.

Installation of your headboard is now complete!

Notes

Notes



Opera Beds

Azure House, Connaught Road,
Kingswood, Hull. HU7 3AP
0333 222 8584
support@operabeds.com
operabeds.com